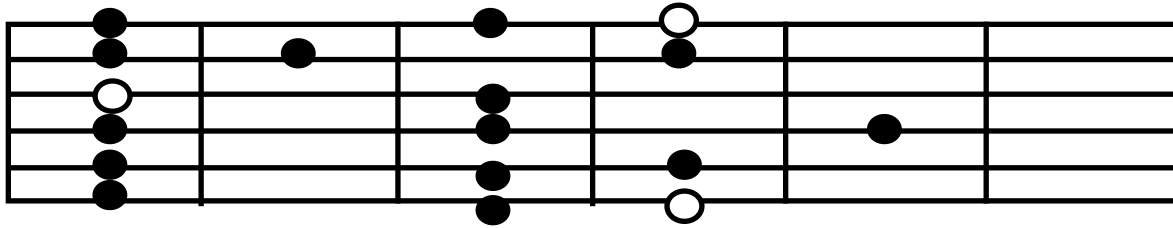


# MAJOR SCALE (with modes): FIVE FORMS

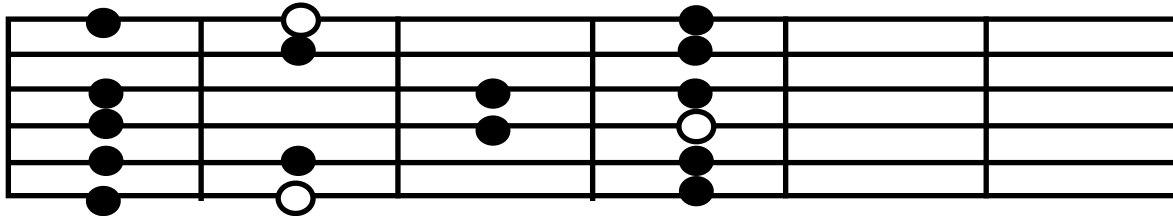
○ = ROOT

● = CHORD TONE

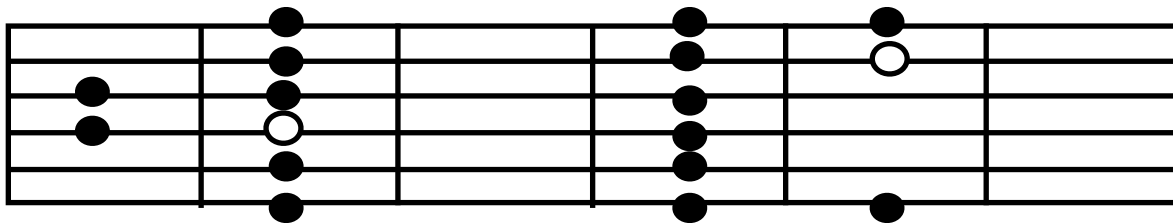
FORM 5 (Aeolian/minor mode)



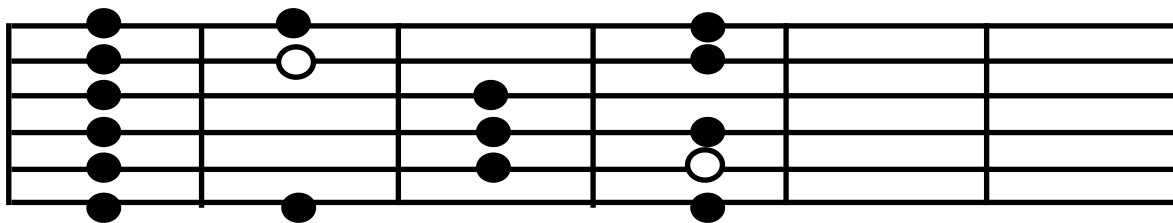
FORM 1 (Locrian mode)



FORM 2 (Dorian mode)



FORM 3 (Phrygian mode)



FORM 4 (Lydian mode) \*Mixolydian mode starts on the 2nd note

